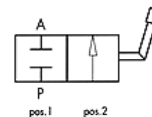


RSAP2V

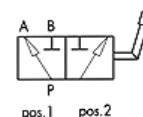
Sklandė dvipusė



Kodas	Sriegiai	Q maks. l/min	P maks. Bar	
RSAP02V01	1/4"	25	500	
RSAP02V02	3/8"	35	500	
RSAP02V03	1/2"	60	500	
RSAP02V04	3/4"	100	400	
RSAP02V05	1"	180	350	
RSAP02V06	1 1/4"	180	350	
RSAP02V07	1 1/2"	180	350	

RSAP3V

Sklandė tripusė



Kodas	Sriegiai	Q maks. l/min	P maks. Bar	
RSAP03V01L	1/4"	25	400	
RSAP03V02L	3/8"	35	400	
RSAP03V03L	1/2"	60	350	
RSAP03V04L	3/4"	100	350	
RSAP03V05L	1"	180	350	
RSAP03V06L	1 1/4"	180	350	
RSAP03V07L	1 1/2"	180	350	

DDF3

Sklandė tripusė

Atviras centras



Kodas	Sriegiai	Q maks. l/min	P maks. Bar	
DDF3V02A	3/8"	35	250	
DDF3V03A	1/2"	60	250	
DDF3V04A	3/4"	100	250	
DDF3V05A	1"	180	250	



* uždaro centro tipas - užsakomas

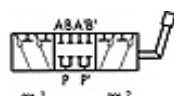
DDF6

Sklandė šešiapusė

Atviras centras



Kodas	Sriegiai	Q maks. l/min	P maks. Bar	
DDF3V02A	3/8"	35	250	
DDF3V03A	1/2"	60	250	
DDF3V04A	3/4"	100	250	
DDF3V05A	1"	180	250	

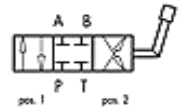


* uždaro centro tipas - užsakomas

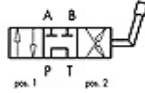
IF3

Sklendė keturpusė

Uždaras centras



Kodas	Sriegiai	Q maks. l/min	P maks. Bar	
IF3V02	3/8"	35	250	
IF3V03	1/2"	60	250	
IF3V04	3/4"	100	250	

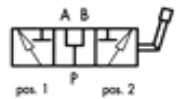


* atviro centro tipas - užsakomas

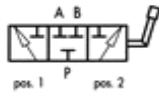
DDF3...AP

Sklendė tripusė

Atviras centras



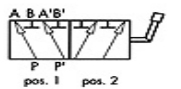
Kodas	Sriegiai	Q maks. l/min	P maks. Bar	
DDF3V01 AP	1/4"	20	500	
DDF3V02 AP	3/8"	35	500	
DDF3V03 AP	1/2"	60	500	
DDF3V04 AP	3/4"	100	500	
DDF3V05 AP	1"	180	500	



* uždaro centro tipas - užsakomas

DDF3...AC

Sklendė šešiapusė



Kodas	Sriegiai	Q maks. l/min	P maks. Bar	
DDF3V01 AC	3/8"	40	300	
DDF3V02 AC	1/2"	60	300	